

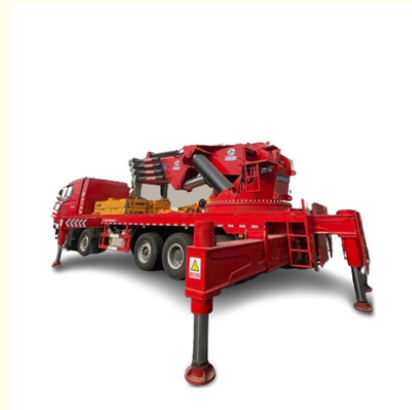


25 Tons Used Truck Crane XCMG QY25K5-I 32.3M Lift Boom With Cargo Crane Truck

Our Product Introduction

Basic Information

- Place of Origin: China
- Brand Name: Dongfeng, Shacman, Howo
- Model Number: Crane Truck
- Minimum Order Quantity: 1
- Price: \$38,000.00/units ≥ 1 units
- Delivery Time: 10-20work days
- Payment Terms: L/C, D/A, D/P, T/T
- Supply Ability: ≥ 100 units



Product Specification

- Emission Standard: Euro -
- Engine: B190 33
- Transmission: DF6S900
- No. Of Gears: 6 Forward Gears & 1 Reverse
- Type: 4X2 6X4 8X4
- Driving Type: Left Hand Driving
- Tyre: 9.00R20
- Upload Brand: XCMG, SANY, CIMC
- Chassis Weights: 14490kg
- Max Torque: 670 N.m /1300-1500(rpm)
- Max Power: 132(KW) /2500(rpm)
- Engine System: Water Cooled,turbocharged,after Cooled
- Highlight: **xcmg cargo crane truck,
xcmg china crane truck,
25 tons cargo crane truck**

Product Description

There are both new and second-hand trucks. Just tell us your transportation needs and we will customize tractors with different loading weights, volumes, and colors. A good truck will help you work well.

Product Description of Crane Truck:

Horn: used to warn people within the working range during lifting operations.

Accelerator joystick: The accelerator joystick is used to adjust the engine speed and output power to meet the lifting needs.

Rotation joystick: The rotation joystick is used to control the rotation mechanism to make the column and the crane arm rotate left and right.

Luffing joystick: The luffing joystick is used to control the telescopic movement of the luffing cylinder to achieve the height control of the boom.

Winch joystick: The winch joystick is used to control the winch mechanism (to lift or lower heavy objects).

Telescopic joystick: The telescopic joystick is used to control the telescopic cylinder movement and control the telescopic arm through the telescopic pulley frame.

Product Application of Crane Truck :

A truck crane is a special vehicle that uses a hydraulic lifting and telescopic system to achieve the lifting, rotation and lifting of goods. It is usually installed on a truck. A truck crane is generally composed of a truck chassis, a cargo compartment, a power take-off, a crane and outriggers. It can be used in daily mining, construction cleaning, handling, wood, sand pumping, etc.

Product Features of Crane Truck:

Product Name	Crane Truck 4X2 6X4 8X4
Wheelbase	4500mm
Engine Model	B190 33
Emission Level	Euro
Fuel	Steel fuel tank, with lockable cap
Oil Tanker Capacity	160L
Tyre	9.00R20
Colour	As customer's request
Chassis Weights	14490kg
Provide After-sales Service	Video technical support, online support

▲ The values in the configuration table are subjected to change. The data in the configuration table are for reference only. Mix and matching some configurations may not be technically possible, please contact your local sales representative to help you choose the right specifications for your needs.

Product Image







FAQ

1.Q: What kind of payment do you accept?

A: We accept T/T; L/C and Western Union; Others payment is negotiable.

2.Q: What's your minimum order quantity?

A: One unit

3.Q: What's your delivery time?

A: Determine according to the specific model. Dump truck usually 30 days after received the deposit.

4.Q: What's warranty time?

A: 30,000 km or 12 months from the date of shipment whichever comes first

5.Q: What's your after-sale service?

A: We provide technical support for our trucks and whole life parts supply

Hot Tags: China crane truck, price, best, brand new, for sale



Zhengzhou Hongyang Automobile Sales Service Co., Ltd.



13629843569



celia@zzhonyang.cn



chinadumptrucks.com

Room 907, Block A, Shenglong Golden Central, Intersection of Longhai Road and Tongbai Road, Zhongyuan District, Zhengzhou City