



## Customizable 38m Concrete Pump Heavy Truck 6X4 8X4 For Construction

Our Product Introduction

for more products please visit us on [chinadumptrucks.com](http://chinadumptrucks.com)

### Basic Information

- Place of Origin: China
- Brand Name: Pump Truck
- Minimum Order Quantity: 1 Unit
- Price: 110,000.00/units =1 unit
- Delivery Time: 10-20work days
- Payment Terms: L/C, D/A, D/P, T/T
- Supply Ability: 100 units

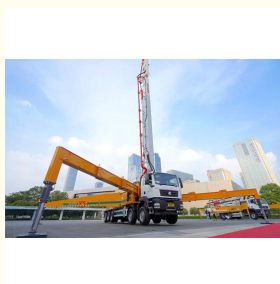


### Product Specification

- Chassis Brand: Shacman, Sinotruk, North Rush Heavy Truck, Dongfeng, Isuzu, Auman
- Emission Standard: Euro -Euro
- Engine Brand: WeiChai/Commins
- Engine Horsepower: 240-470HP
- Drive Type: 4X2, 6X4, 8X4
- Vehicle Weight: 18-47T
- Wheelbase: 1950+4650+1350(mm)
- Size: 13500\*2500\*4000(mm)
- Vehicle Quality: 39000KG
- Arm Frame Length: 28-65(m)
- Turn Table Rotation Angle: 359°
- Main Oil Pump Displacement: 190-260(L/min)
- Inner Diameter Of Conveying Cylinder × 230×1450-260×2100(mm)



### More Images



## Product Description

There are both brand new and second-hand trucks. Just tell us your transportation needs and we will customize tractors with different loading weights, volumes, and colors. A good truck will help you work well.

### Product Description of Concrete Pump Truck:

Rotation anti-sway control technology: adopts the new rotation braking technology, the arm rotation swing amplitude is reduced by 60%, achieving braking.

Significantly reduces labor costs and increases output rates compared to traditional concrete placement methods.

Professional focus and wholehearted service. Free one-on-one on-site training service, 1-hour rapid response, 24-hour after-sales service, efficient service, worry-free throughout the process.

### Product Application of Concrete Pump Truck :

Recently, the main products include 28m, 31m, 33m, 38m, 50m, 58m, and 65m concrete pump trucks and 28m, 38m, 44m, and 46m mixing pump trucks, 24m, 36m, and 47m aerial work vehicles.

Designed to carry substantial payloads, box semi-trailers usually have weight capacities ranging from 20,000 to 40,000 pounds, depending on the specific model and materials used.

Dedicated to serving urban and rural infrastructure, it is an enterprise specializing in the production of large-scale construction engineering machinery and equipment, integrating scientific research, production, sales and after-sales service.

Safety elements, such as reflective markings, anti-lock braking systems, and secure locking mechanisms, are standard to ensure safe transport and compliance with regulations.

This equipment reduces labor costs and accelerates the pouring process, making it ideal for high-rise buildings, bridges, and large-scale projects.

### Product Features of Concrete Pump Truck:

Product Name	Concrete Pump Truck 4X2/6X4/8X4
Wheelbase	1950+4650+1350 mm
Engine Model	WEICHAI/Commins
Horsepower	240-470 horsepower
Vehicle Quality	18000-47000kg
Bridge Number	4
Tyre	11.00R20,12.00R20,12R22.5,295/80R22.5,315/80R22.5
Colour	As customer's request
MAX pumping Capacity	180m <sup>3</sup>
Provide After-sales Service	Video technical support, online support

▲ The values in the configuration table are subjected to change. The data in the configuration table are for reference only. Mix and matching some configurations may not be technically possible, please contact your local sales representative to help you choose the right specifications for your needs.

### Product Image



#### FAQ

1.Q: What kind of payment do you accept?

A: We accept T/T;L/C and Western Union; Others payment is negotiable.

**2.Q: What's your minimum order quantity?**

A: One unit

**3.Q: What's your delivery time?**

A:Determine according to the speciric Moael. dump truck usuaily 30 days after received the deposit.

**4.Q: What's warranty time?**

A: 30,000 km or 12 months from the date of shipment whichever comes first

**5.Q: What's your after-sale service?**

A: We provide technical support for our trucks and whole life parts supply



**Zhengzhou Hongyang Automobile Sales Service Co., Ltd.**



13629843569



celia@zzhonyang.cn



chinadumptrucks.com

Room 907, Block A, Shenglong Golden Central, Intersection of Longhai Road and Tongbai Road, Zhongyuan District, Zhengzhou City